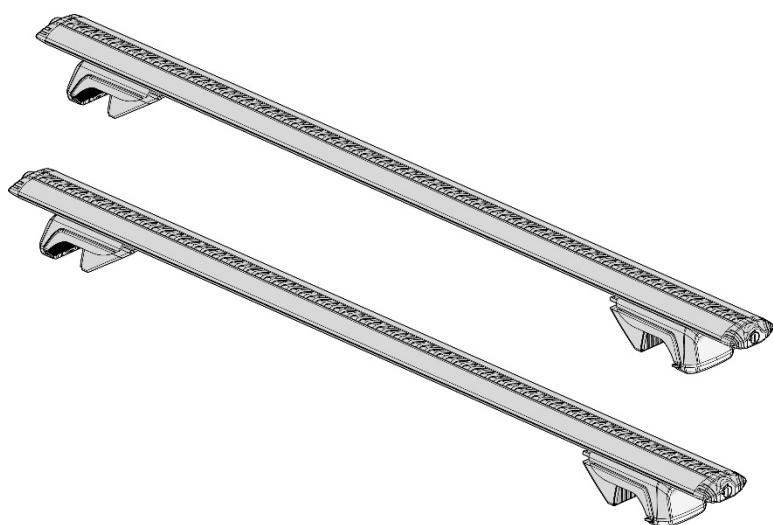


# Raised Rail Overhang Carry Bar

Part number	2HJ.071.151
-------------	-------------

**Amarok ⇒ 2022**

We reserve the right to make changes to the scope of delivery.



## Notes

Dear customer,

Congratulations on choosing this VW accessory.

This manual contains important information, advice, introductions and warnings on fitting and using this component in your vehicle which must be strictly adhered to. Please also read and observe the information's and warnings kept in the vehicle manual.

Volkswagen Zubehör work continuously to develop and further improve all products. This is why it is possible to alter any part of the scope of delivery equipment and technology at any time. The data provided concerning the scope of delivery appearance and functions of the product correspond to the information available at the time of its going to print

## List of Content

issue	Page
Warnings	En – 2
Advices	En – 2
Maintenance	En – 2
Carrying capacity	En – 2
Kits required	En – 3
Scope of delivery	En – 3
Tools to be used	En – 3
Mount of scope of delivery	En – 4



## Warnings

1. The assembly of this scope of delivery must be performed at a specialist workshop!
2. Only use undamaged tools to implement of all the work steps.
3. Occupational health and safety must be adhered to during the work!
4. Please refer to this fitting instruction to ensure the product is installed correctly.
5. Check the contents of the kit before commencing fitment and report any discrepancies.
6. Place these instructions in the vehicle's glove box after installation is complete.
7. These instructions must be followed for the warranty to be upheld.



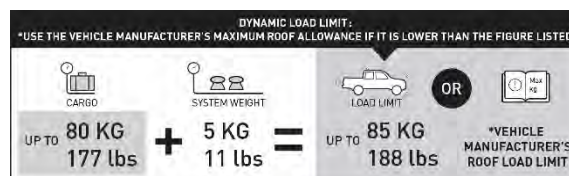
## Advice

1. Distribute loads evenly and laterally and longitudinally as low as possible over the span of the rack
2. Avoid point loads concentrated in at the front, rear or center span of the racks if possible.
3. Exercise extreme care when transporting wind-resistant loads. Special consideration must be taken when cornering and braking
4. Off-road conditions can be much more rigorous. Extreme care must be taken on any off-road path.
5. Long flexible loads must attach securely to a rigid support and be tied to the bonnet.
6. Loads must be tied to the cross bars, not the roof rack legs
7. Use only non-stretch fastening ropes or straps to attach cargo to the roof.
8. Roof racks must be removed when going through an automatic car wash.
9. Canopies can move independently from the vehicle cabin. Rigidly fix to either the cabin roof racks **or** the canopy roof racks but not both simultaneously.
10. Warranty for roof rack system will be void if the front of the kayak is not secured to the bonnet.
11. Attach an edge load safety flag for on rear over-hanging loads

## Maintenance Checks

1. All bolt connections should be checked after driving a short distance when you first install your roof racks.
2. All bolted connections should be checked again at regular intervals (weekly is recommended, depending on road conditions, usage, loads and distances travelled).
3. All bolted connections should be checked each time they are re-fitted.
4. Off-road conditions are more rigorous. Check all bolted connections and your load more regularly.
5. Ensure that your vehicle manufacturer's GVM, and gross axle weights are not exceeded (refer to vehicle owner's manual).

## Carrying Capacity



### Kits Required

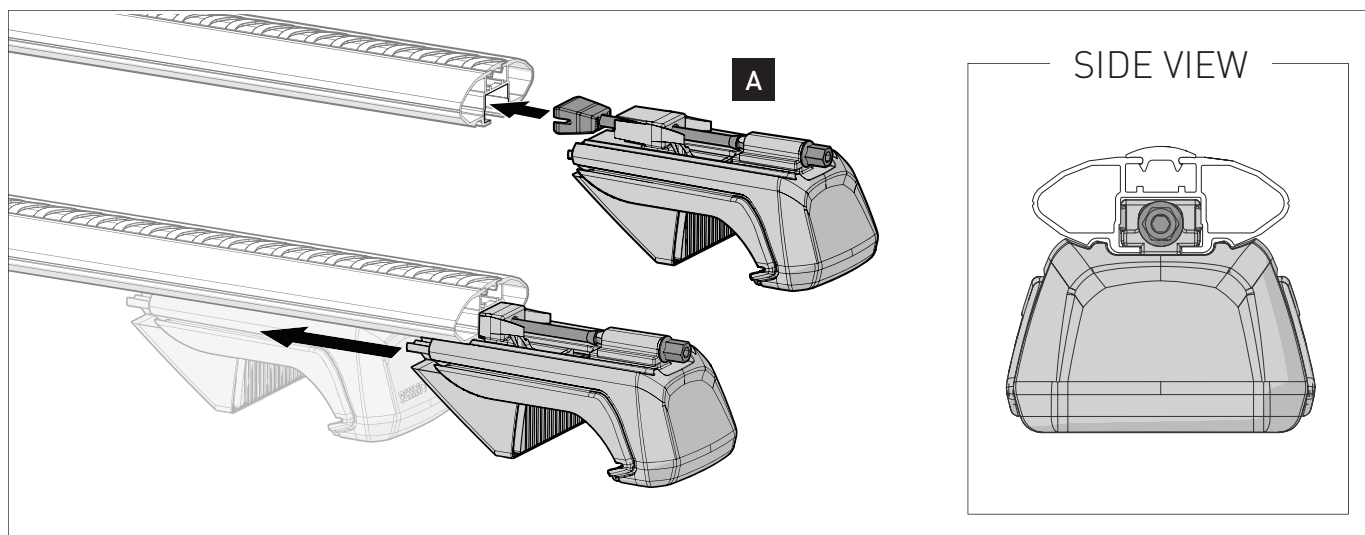
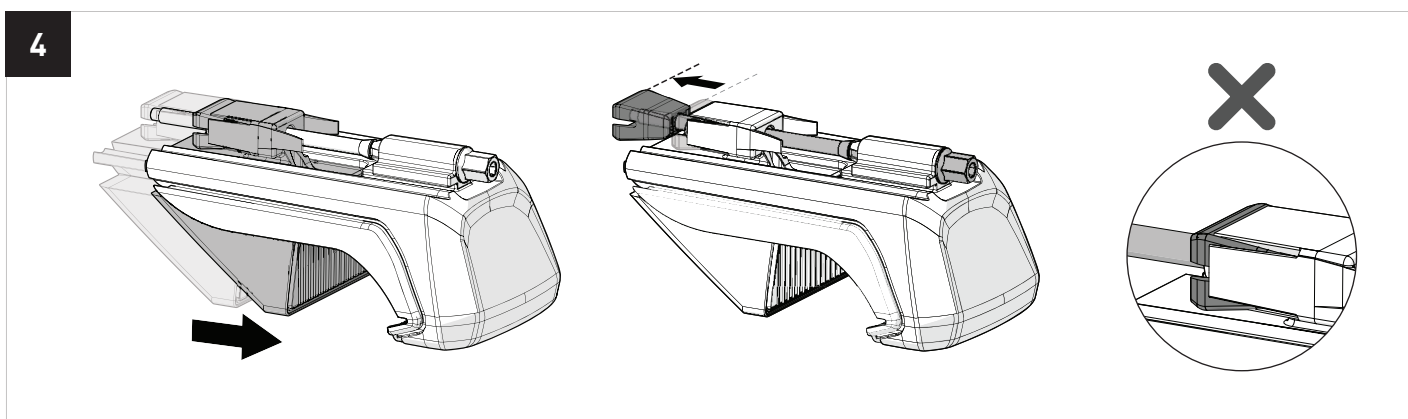
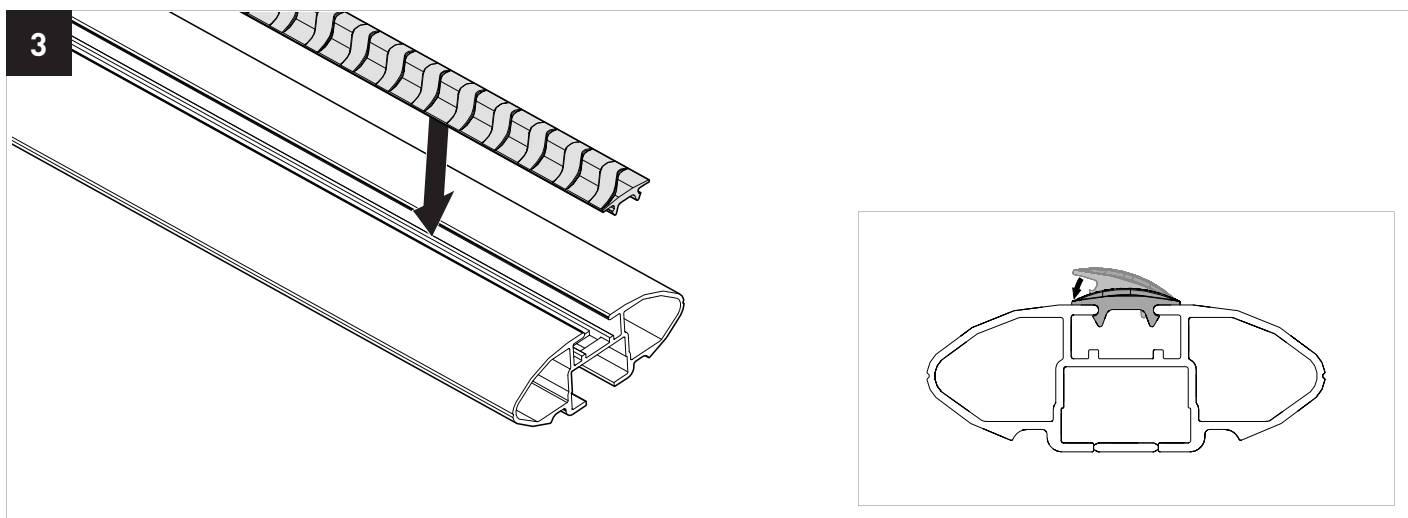
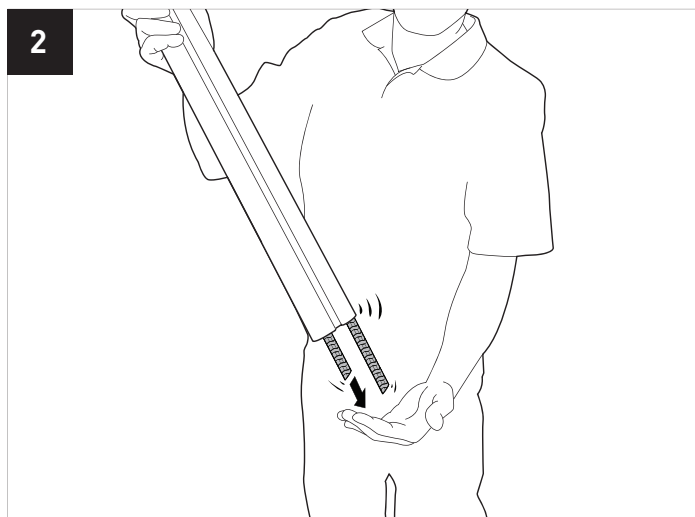
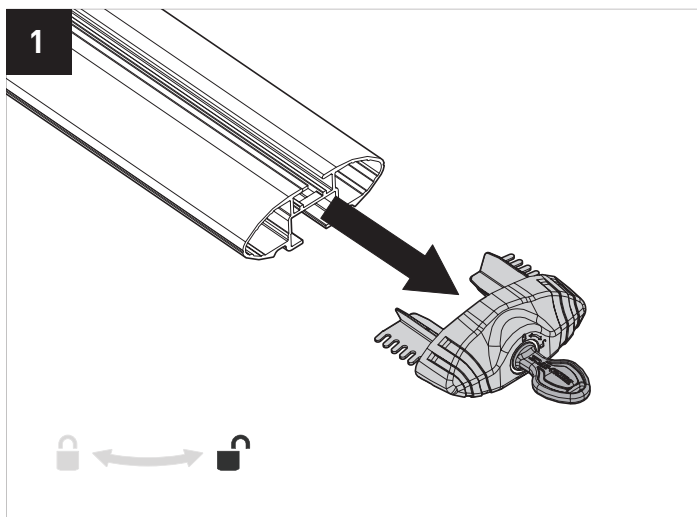
Item	Kit	Piece
01	Base Kit	1 piece
02	Leg Kit	1 piece
03	Bar Kit	2 pieces

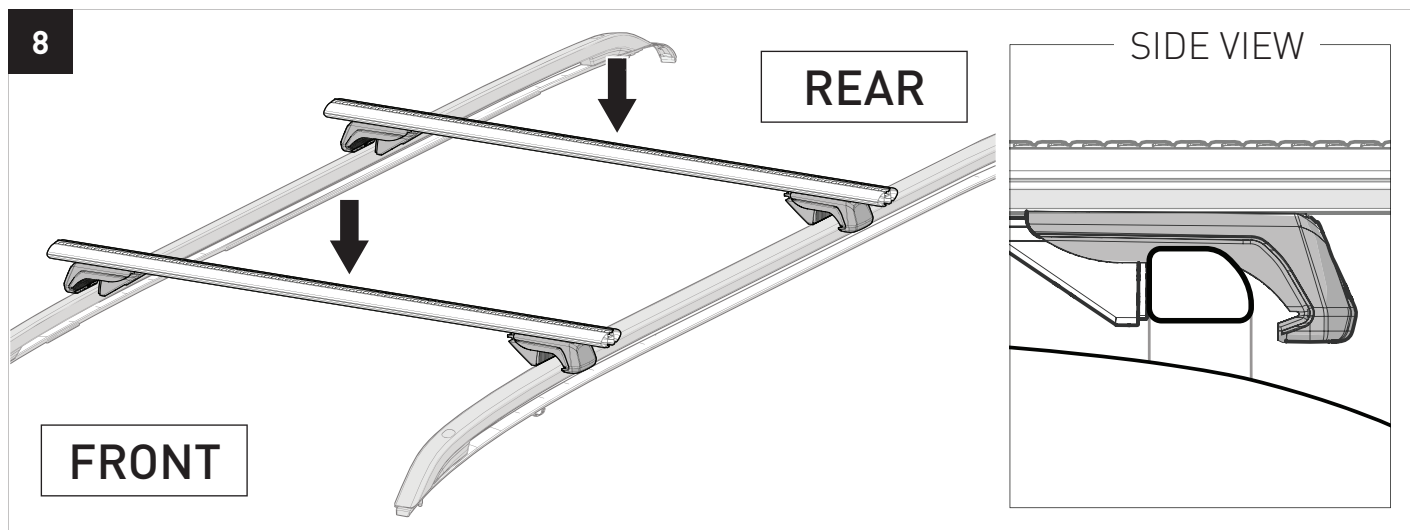
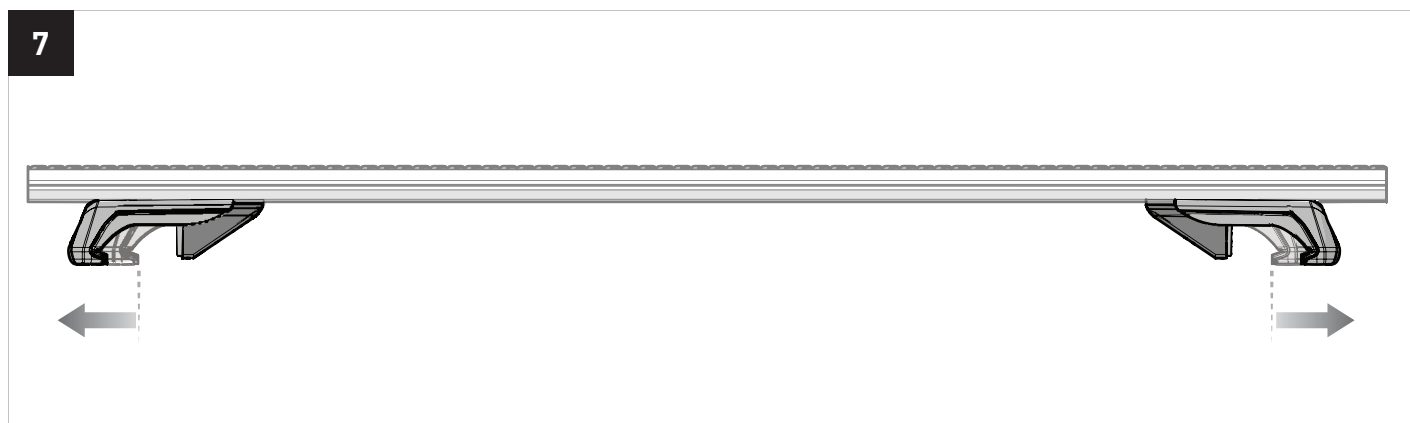
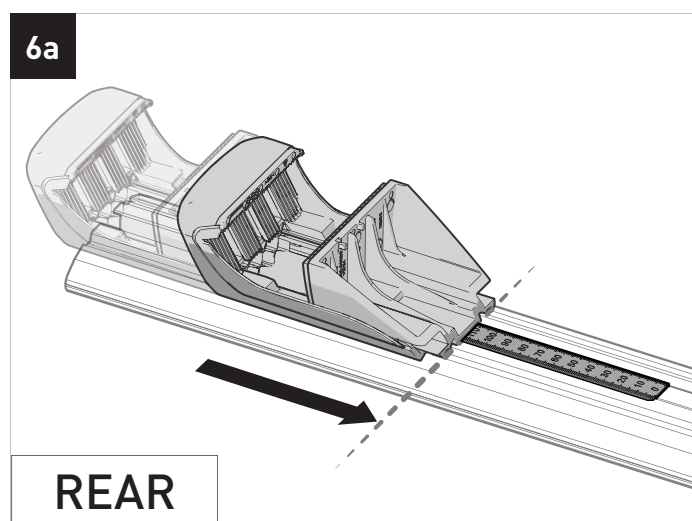
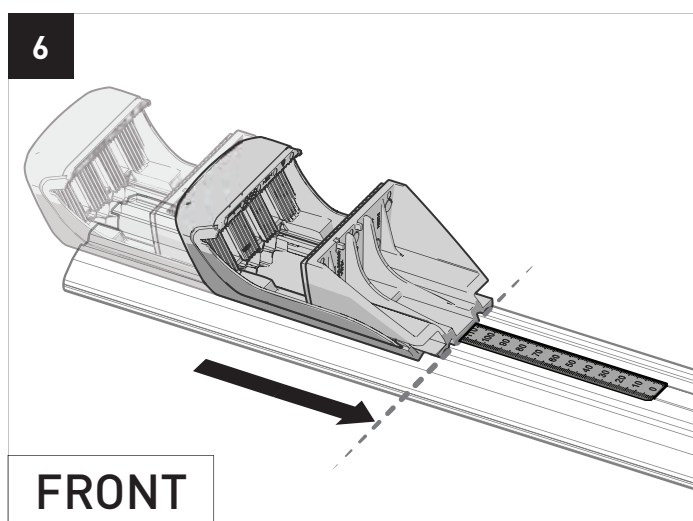
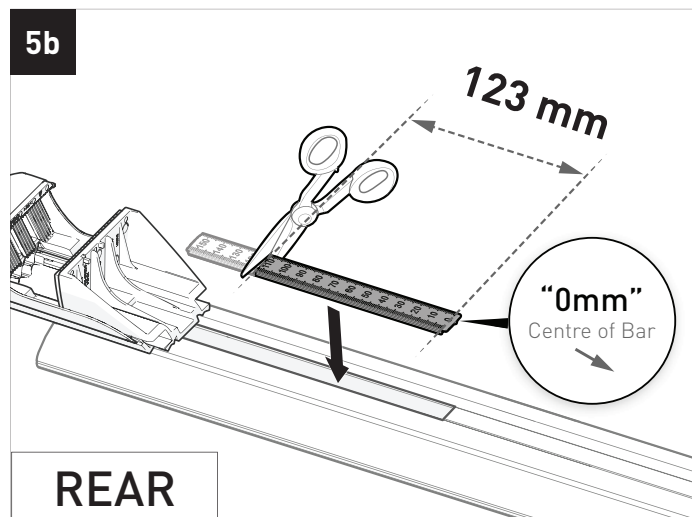
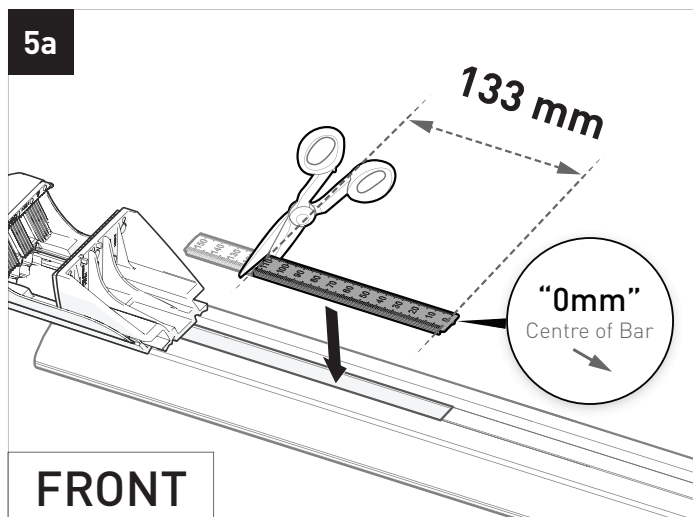
### Scope of delivery

Position	Component	Piece
01	Leg Assembly	4 pieces
02	Torque Tool	1 piece

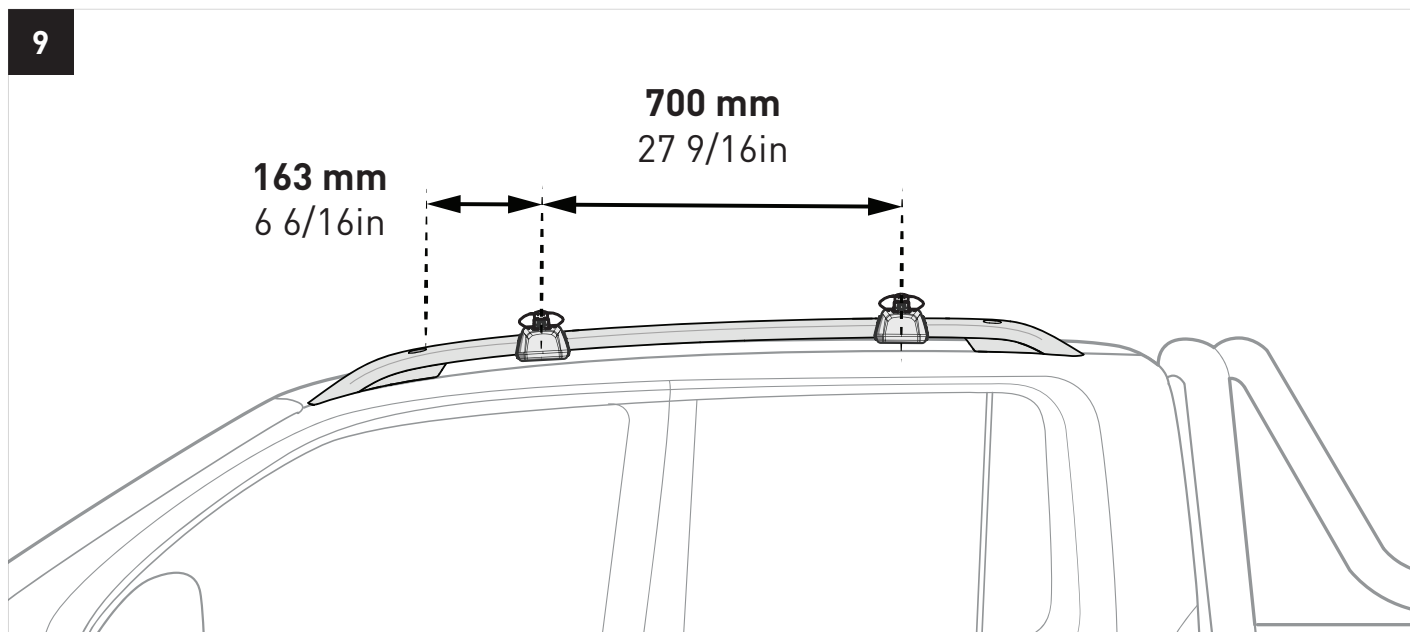
### Tools to be used

- Tape Measure
- Marker
- Scissors

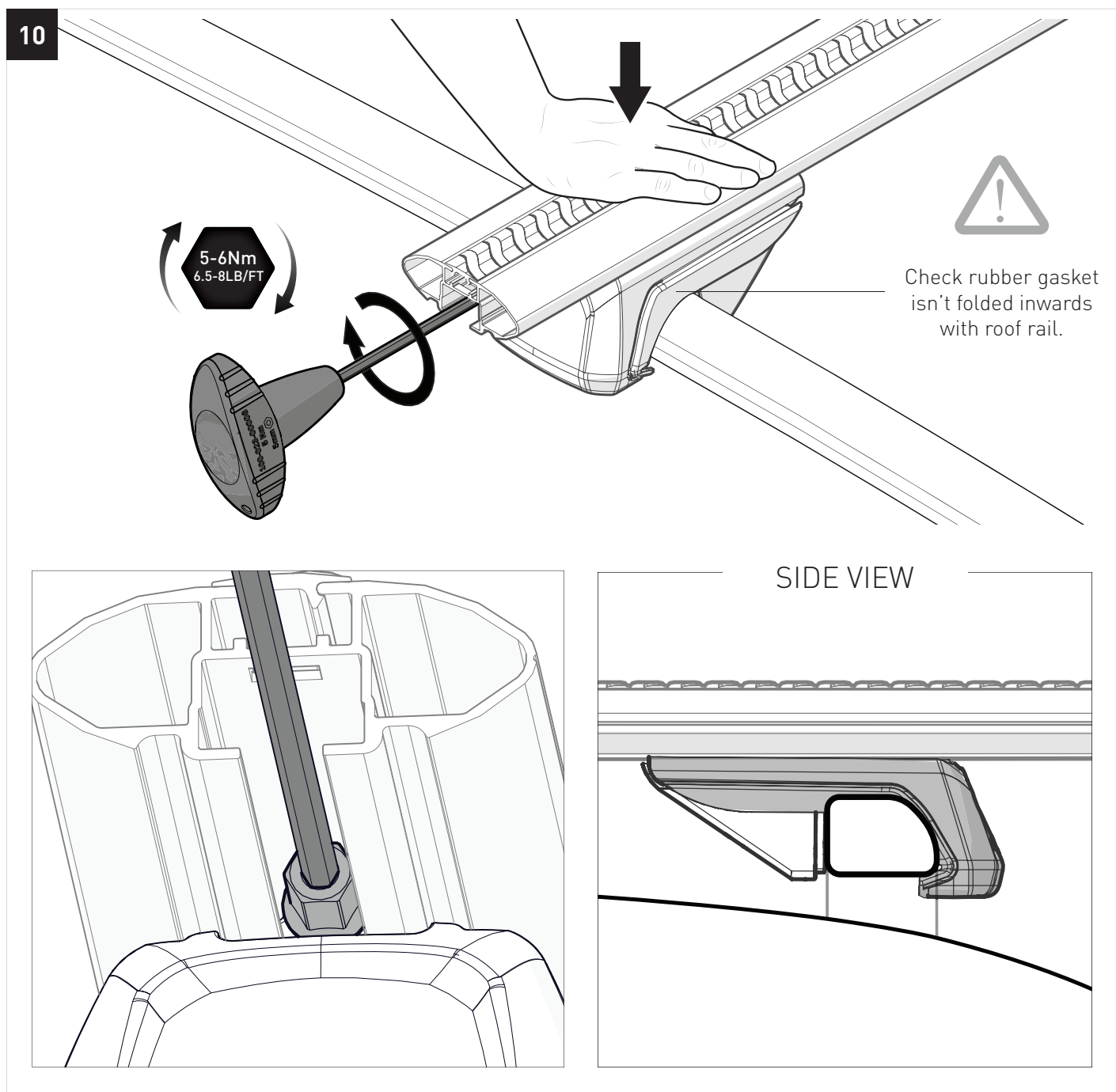


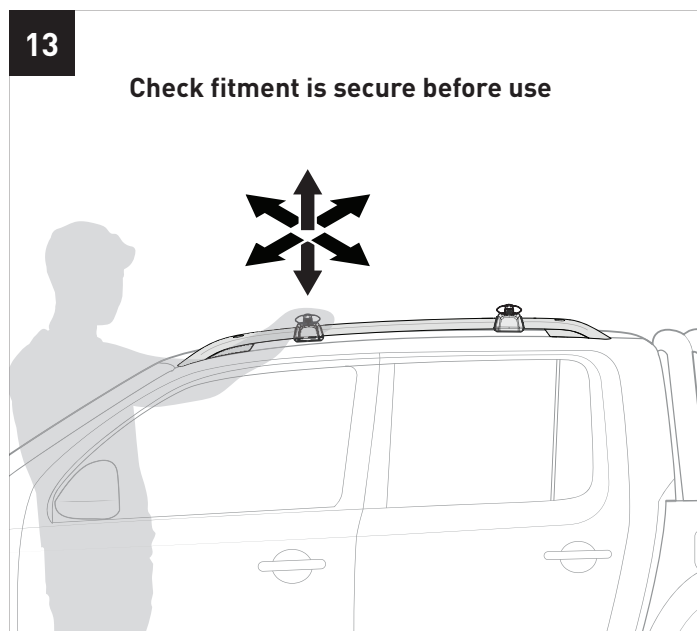
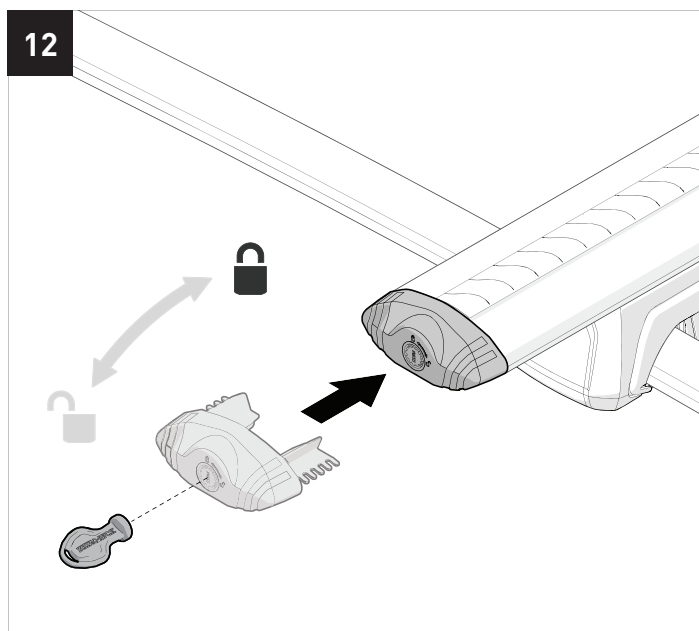
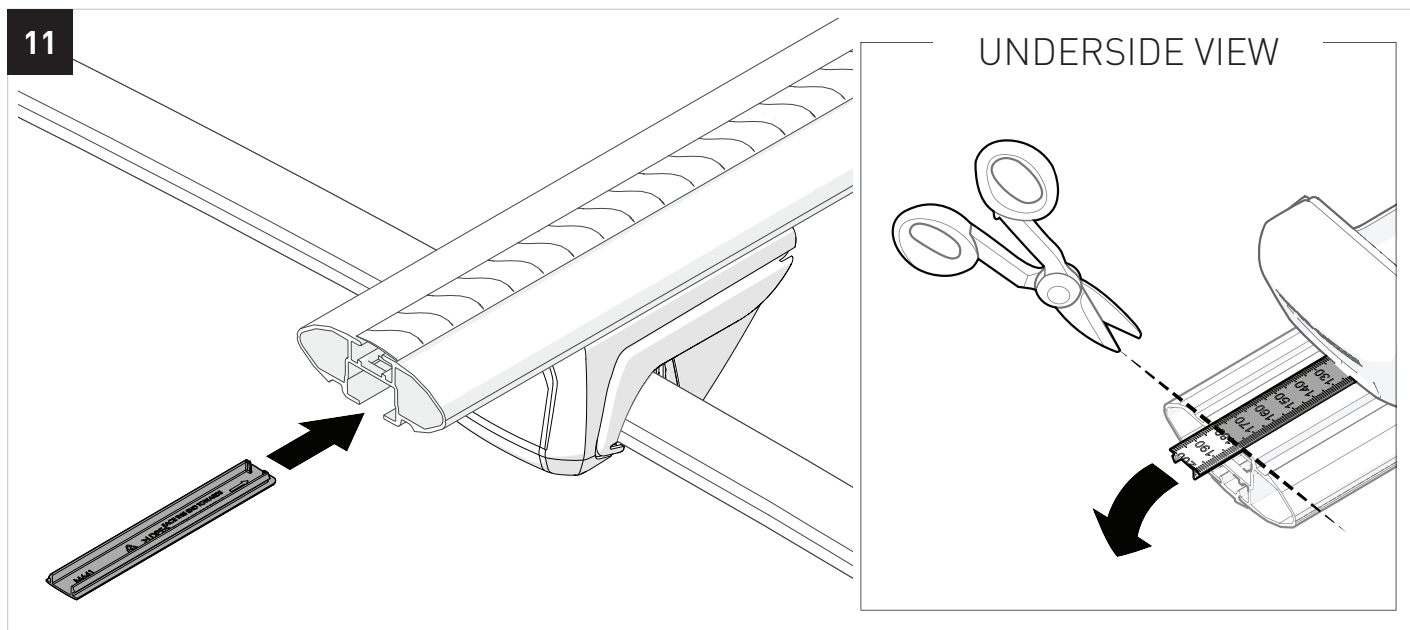


9



10





BLANK