

## Installation instructions

**Audi A3 (8V) 2013 ►**

**Audi A3 (8V) 2018 ►**

**Retrofitting the CCS  
for scope of delivery 8V0.054.690\***

**Audi Genuine Accessories®**

Edition 01



## Contents

<b>1</b>	<b>General notes</b> .....	<b>1</b>
<b>2</b>	<b>Parts overview</b> .....	<b>2</b>
<b>3</b>	<b>Installing the CCS switch module</b> .....	<b>4</b>
3.1	Preparations .....	4
3.2	Adjusting the vehicle coding and carrying out a functional check .....	4
3.3	Amending the vehicle data sticker on the Audi A3 (2013–2018) .....	5
3.4	Amending the vehicle data sticker on the Audi A3 (from 2018) .....	5



# 1 General notes

Please read these instructions carefully and note the WARNING, Caution and Note descriptions before the "CCS" is fitted and/or coded.



## **WARNING**

***Text with this symbol contains information regarding safety and indicates potential accident and injury risks.***



## **Caution**

***Text with this symbol indicates the risk of damage to the vehicle.***



## **Note**

*Text with this symbol contains additional information.*

**Special tools are required for assembly.**

**Improper installation can cause damage to the vehicle or the add-on parts.**

**Audi AG shall not accept responsibility in the event of failure to comply with these installation instructions.**



## 2 Parts overview

### CCS retrofit kit 8V0.054.690.D ff for A3 3-door models and A1 Sportback (2013–2018)

- ◆ For vehicles with multifunction steering wheel and onboard computer
- ◆ For vehicles without onboard computer

Units	Part number	Description
1	8V0.953.502.B ff	Steering column switch module with CCS
1	8V0.054.800.A ff	Activation document
1	WSK.014.720.HA ff	Information sheet

### CCS retrofit kit 8V0.054.690.E ff for A3 3-door models and A1 Sportback (2013–2018)

Units	Part number	Description
1	8V0.953.502.C ff	Steering column switch module with CCS
1	8V0.054.800.A ff	Activation document
1	WSK.014.720.HA ff	Information sheet

### CCS retrofit kit 8V0.054.690.F ff for A3 Saloon and Cabriolet (2013–2018)

- ◆ For vehicles with multifunction steering wheel and onboard computer
- ◆ For vehicles without onboard computer

Units	Part number	Description
1	8V0.953.502.H ff	Steering column switch module with CCS
1	8V0.054.800.A ff	Activation document
1	WSK.014.720.HA ff	Information sheet

### CCS retrofit kit 8V0.054.690.G ff for A3 Saloon and Cabriolet (2013–2018)

- ◆ For vehicles with multifunction steering wheel and onboard computer

Units	Part number	Description
1	8V0.953.502.J ff	Steering column switch module with CCS
1	8V0.054.800.A ff	Activation document
1	WSK.014.720.HA ff	Information sheet

### Additional components required (2013–2018):

Units	Part number	Description
1	8V0.953.512.ZZ1 <sup>1)</sup>	Trim (in matching colour), Audi A3

<sup>1)</sup> Not included in the scope of delivery; choose and order the appropriate unit to match the vehicle equipment or colour from the Audi Parts Service (ETKA).



**Scope of delivery 8V0.054.690.L for A3 Sportback (from 2018)**

Units	Part number	Description
1	82A.953.521.BE	Steering column switch module with CCS, rear window wiper, speed limiter
1	8V0.054.800.A	Activation document
1		Information sheet

**Scope of delivery 8V0.054.690.M for A3 Saloon (from 2018)**

Units	Part number	Description
1	82A.953.521.CG	Steering column switch module with CCS, rear window wiper, speed limiter
1	8V0.054.800.A	Activation document
1		Information sheet

**Additional components required (from 2018):**

Units	Part number	Description
1	8V0.953.512.N	Trim (without keyless-entry )
1	8V0.953.512.Q	Trim (with keyless-entry )



## 3 Installing the CCS switch module

### 3.1 Preparations

- Disconnect the battery ⇒ Electrical system; Rep. gr. 27; Battery; Disconnecting and connecting the battery
- Remove the steering column switch module ⇒ Electrical system.; Rep. gr. 94; Steering column switch module; Removing and installing the steering column switch module
- Replace the steering column switch module with the steering column switch module with CCS
- Reassemble the vehicle by following the steps in reverse order.

### 3.2 Adjusting the vehicle coding and carrying out a functional check

**Required special tools, testing instruments, measuring instruments and auxiliary devices**

- ◆ Vehicle diagnostic tester

#### Vehicle coding



#### **WARNING**

***The CCS is only retrofitted and coded with the speed limiter function included!***

- Code the vehicle using the vehicle diagnostic, testing and information system
- ◆ Carry out the retrofit via the “Audi flashing” (Audi Flashen) menu item
- From the “Audi flashing” (Audi Flashen) menu item, select the “SVM activation” (SVM-Freischaltung) menu item
- While working through the menu, the data from the activation document will need to be entered (the process is outlined in the activation document)
- Then confirm “Target/actual comparison” (Soll-/Ist- Vergleich) with “YES” (JA)
- Check that the CCS is working correctly



#### **Note**

*After successfully completing this action, the vehicle with the conversion is registered in the database at Audi.*

- ◆ Clear the fault memory.
- ◆ Call up the fault memory again.
- ◆ Check that the CCS is working correctly



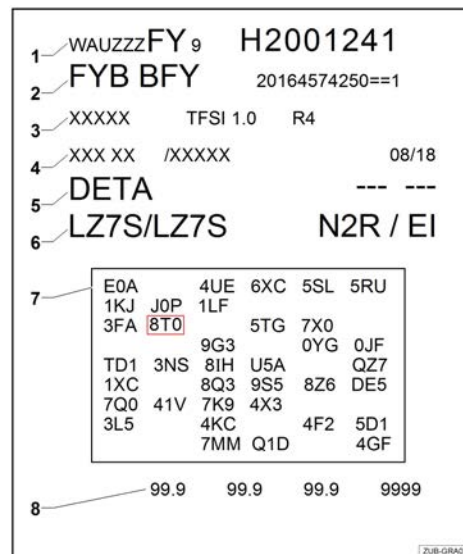
### 3.3 Amending the vehicle data sticker on the Audi A3 (2013–2018)

Change the PR numbers on the vehicle data sticker by hand as follows:

- If “8T0” is shown on the sticker, cross it out by hand.
- Enter the PR number “8T2” by hand in area -7-.

**Note**

The vehicle data sticker can be found in the customer's service schedule and also in the spare wheel well on the vehicle or on the underside of the luggage compartment floor covering.



### 3.4 Amending the vehicle data sticker on the Audi A3 (from 2018)

Change the PR numbers on the vehicle data sticker by hand as follows:

- If “8T0” or “8T9” is shown on the sticker, cross it out by hand.
- Enter the PR number “8T6” by hand in area -7-

**Note**

The vehicle data sticker can be found in the customer's service schedule and also in the spare wheel well on the vehicle or on the underside of the luggage compartment floor covering.

