

TERRA-S®

STANDARD KIT INSTRUCTIONS

DIAL GAUGE

- Measures BAR/PSI



LIGHT

- 10 Lumens
- Bright LED for night-time emergencies

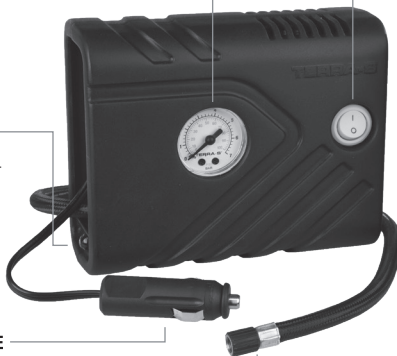


POWER SOURCE

- Plugs into 12V power outlet

ON/OFF SWITCH

TYRE SEALANT (700mL)



AIR HOSE



VALVE CORE REMOVAL TOOL



ADAPTERS

TERRA-S® Standard Kit provides a quick emergency repair. Treated tyres should be repaired by a qualified tyre professional at the earliest opportunity to ensure safety and proper cleaning of tyre pressure sensor, if so equipped. We recommend treated tyre be repaired within 3 days or 160km after use of TERRA-S Tyre Sealant, whichever comes first. Advise tyre professional of product use.



ATTENTION! READ ALL INSTRUCTIONS CAREFULLY
FAILURE TO FOLLOW WARNING INSTRUCTIONS CAN RESULT IN FIRE, PERSONAL INJURY OR PROPERTY DAMAGE.



⚠ WARNING

VEHICLE EXHAUST WITHOUT PROPER VENTILATION IS EXTREMELY DANGEROUS. ALWAYS ALLOW FOR PROPER VENTILATION.

Ensure that the vehicle is outside, or in an open, well-ventilated area and NOT INSIDE A CONFINED AREA, SUCH AS A GARAGE as bodily injury or asphyxiation resulting in death could occur. Always operate the inflator in a well-ventilated area free of combustible materials, gasoline, or solvent vapors. Always set parking/emergency brake and ensure vehicle is in Park (or neutral if equipped with manual transmission).

CAUTION: HOT • DO NOT HOLD IN HAND WHILE OPERATING

NOTICE: ENGINE SHOULD BE RUNNING WHILE USING THIS INFLATOR

It is recommended that you operate your inflator with your vehicle's engine running to achieve the optimal inflator performance. Never start a vehicle with the inflator plugged into the DC 12 Volt power socket.

- Do not attempt to disassemble inflator.
- No user serviceable parts inside. The only user serviceable part is the replaceable fuse.
- Keep inflator out of reach of children.
- Place inflator on a hard, clean surface.
- Ensure air hose chuck touches the core of the valve stem for proper inflation.
- DO NOT use inflator continuously for more than 10 minutes. Allow unit to cool approximately 25 minutes between uses. Do not leave inflator unattended.
- ALWAYS use a pressure gauge to check tyre pressure. DO NOT over-inflate.
- Soft inflatables (i.e. rafts, balls, etc.) may not have recommended pressure markings. Be careful not to inflate items beyond their capacity.
- While operating, never block the inflator input or output.
- For use with 12 volt DC power outlets rated 15 amps or higher.
- Do not use with older 8 amp cigarette lighter receptacles.

HOW MUCH SEALANT PER TYRE?



700mL

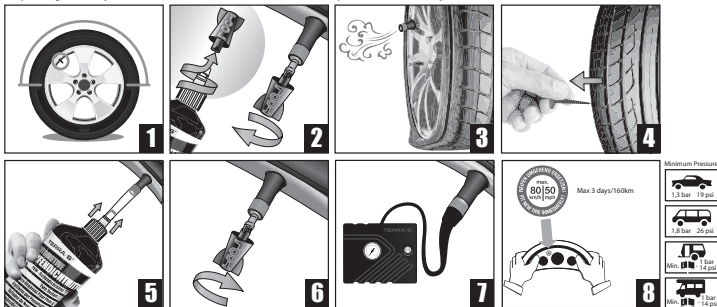
SEALANT REMOVAL INSTRUCTIONS

For the tyre repair professional:

The sealant should be wiped out of the tyre prior to making a permanent repair. The best way to achieve this, while protecting the environment, is to use a cloth or several clothes to collect the sealant and wipe the rest from the inside of the tyre. The sealant trapped within the fabric can then be disposed of in a clean and safe manner according to the local regulations.

INSTALLATION INSTRUCTIONS

Repairing a flat tyre with a TERRA-S Standard Kit is simple and takes only 12 minutes.



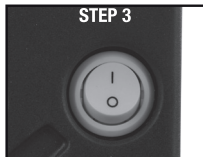
1. Start by rotating tyre so that the valve stem is in the upper half of the tyre.
2. Slowly remove the valve core with valve core tool provided. Take care to keep a hold of the valve core as remaining pressure in the tyre can cause the core to shoot out.
3. Allow the tyre to fully deflate.
4. Remove the puncturing object if possible.
5. Shake the bottle. Place white cap on sealant bottle. Attach filler tube to the bottle tip and tyre valve stem and squeeze in whole bottle content of TERRA-S Tyre Sealant.
6. Replace the valve core.
7. Inflate the tyre.



Screw on air hose onto valve stem.



Plug power cord into power outlet receptacle.



Turn on inflator and when proper pressure is reached, turn off inflator, unplug power cord and remove connector.

*NOTE: Correct tyre pressure can be found in vehicle owner's manual or on driver's side door jamb.

8. Immediately after inflating, drive for 2mi (3km) and stop to verify that the puncture has been sealed. Check tyre pressure. Reinflate if necessary. Apply the provided sticker to your windshield to remind you not to overspeed until you reach home or a workshop to have your tyre professionally repaired. Drive under 50mph (80km/h) to avoid vibrations caused by the presence of sealant in your tyre.

NOTE: Introducing a liquid in a tyre provokes vibrations at certain speeds, according to general physics laws. If you experience vibrations while driving after the repair, slow down.

TROUBLESHOOTING

Inflator does not turn on:

1. Check the fuse. It may have blown. 12V fuse is located in the plug adapter. Unscrew the tip, remove fuse, and inspect. If necessary, replace fuse with 15A 250V 5mm x 20mm.
2. Check vehicle's power outlet fuse; it should be a minimum of 15 amps.
3. Check receptacle and plug terminals for dirt (particularly tobacco). Use a non-conductive probe (not fingers or metal) to dislodge and remove debris.
4. Push the power plug firmly into the receptacle and twist it back and forth.
5. Thermal overload protection may have activated. Allow unit to cool for 25-30 minutes then retry.



Inflator does not start and fuse has been checked:

1. Check power accessory outlet for debris and remove if necessary. Use a nonconductive probe; not fingers or metal.
2. Be sure vehicle power outlet fuse is at least 15 amps. (Vehicle may need to be turned on to power auxiliary port.)

Inflator runs but does not inflate:

1. Be sure the connector is screwed onto the valve stem as far as possible.
2. Check tyre for leaks and check hose for breaks and leaks at fittings.

Inflator runs slowly:

1. The unit may have overheated from excessive use. Shut it off and allow it to cool for 25 minutes.
2. Voltage may be too low. Check condition of vehicle's battery.

NOTE: If tyre is totally deflated, it is possible that the tyre could separate from the rim, allowing air to leak out when trying to inflate. In the event this occurs, jack up the vehicle to aid inflation. If this does not work call roadside assistance.

WARNING: Contains: Natural rubber latex; Ethylene glycol; 2-methylisothiazol-3(2H)-one. Harmful if swallowed. May cause an allergic skin reaction. May cause damage to organs (kidneys) through prolonged or repeated exposure (oral). Keep out of reach of children. Avoid breathing mist, spray, vapours. Do not eat, drink or smoke when using this product. Wear protective gloves, eye protection. IF SWALLOWED: Call a POISON CENTER, doctor if you feel unwell. IF ON SKIN: Wash with plenty of soap and water. If skin irritation or rash occurs: Get medical advice/attention. Dispose of contents and container to hazardous or special waste collection point, in accordance with local, regional, national and/or international regulation.

In case of emergency contact local poison control. Reference UFI: U1Q1-GEGX-3FOY-6HH3

QUESTIONS OR COMMENTS: Call +49-7551-9200-0 or visit www.terra-s.com.

ITW Global Tire Repair Europe, GmbH • Carl-Benz-Straße 10 • 88696 Owingen • Germany

Saxon House 2-4 Victoria Street • Windsor, England SL4 1EN

TERRA-S® is a trademark of Illinois Tool Works, Inc., registered in the U.S. and other countries.